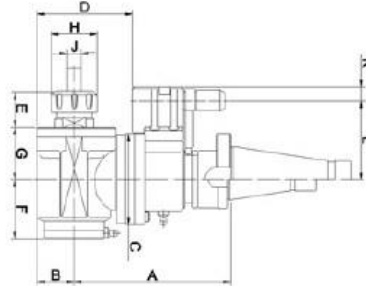




90° Driven angle heads for milling machines



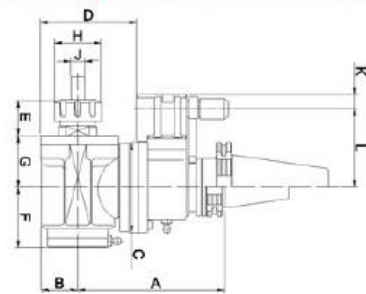
90° Winkelköpfe für Fräsmaschinen, DIN 2080
90° Angle heads for milling machines, DIN 2080



ISO	SZ / Collet	A mm	B mm	C mm	D mm	E mm	F mm	G mm	H mm	I mm	J mm	K mm	L mm	kg	Art.-Nr. / Order no.
50	ER32	171	39,5	98	103	38	65	56	50	88	3-20	15	80/85/110	7,8	<input type="radio"/> 19-WK-ISO50-ER32
50	ER40	171	39,5	98	103	38	65	56	63	88	4-26	15	80/85/110	9,5	<input type="radio"/> 19-WK-ISO50-ER40



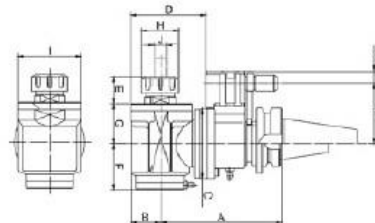
90° Winkelköpfe für Fräsmaschinen, DIN 69871
90° Angle heads for milling machines, DIN 69871



SK	SZ / Collet	A mm	B mm	C mm	D mm	E mm	F mm	G mm	H mm	I mm	J mm	K mm	L mm	kg	Art.-Nr. / Order no.
SK 40	ER32	168	39,5	98	103	38	65	56	50	88	3-20	15	65/80/85	7,8	<input type="radio"/> 19-WK-SK40-ER32
SK 50	ER32	171	39,5	98	103	38	65	56	50	88	3-20	15	80/85/110	9,5	<input type="radio"/> 19-WK-SK50-ER32
SK 40	ER40	168	39,5	98	103	39	65	56	63	88	4-26	15	65/80/85	7,8	<input type="radio"/> 19-WK-SK40-ER40
SK 50	ER40	171	39,5	98	103	39	65	56	63	88	4-26	15	80/85/110	9,5	<input type="radio"/> 19-WK-SK50-ER40



90° Winkelköpfe für Fräsmaschinen, MAS BT
90° Angle heads for milling machines, MAS BT



MAS BT	SZ / Collet	A mm	B mm	C mm	D mm	E mm	F mm	G mm	H mm	I mm	J mm	K mm	L mm	kg	Art.-Nr. / Order no.
BT 40	ER32	168	39,5	98	103	38	65	56	50	88	3-20	15	65/80/85	7,8	<input type="radio"/> 19-WK-BT40-ER32
BT 50	ER32	171	39,5	98	103	38	65	56	50	88	3-20	15	80/85/110	9,5	<input type="radio"/> 19-WK-BT50-ER32
BT 40	ER40	168	39,5	98	103	39	65	56	63	88	4-26	15	65/80/85	7,8	<input type="radio"/> 19-WK-BT40-ER40
BT 50	ER40	171	39,5	98	103	39	65	56	63	88	4-26	15	80/85/110	9,5	<input type="radio"/> 19-WK-BT50-ER40